



THE WAFFLE MAKER TWINs

User manual

ALSO AVAILABLE IN FRENCH AND DUTCH ON FRIFRI.BE

frifri.BE



You are now owner of THE favourite waffle maker of the Belgians since 1958!

THE Frifri waffle maker allows you to quickly and efficiently bake ALL KINDS OF WAFFLES thanks to the 8 different available waffle plates! Release your creativity and fulfil all your cravings.

SAFETY PRESCRIPTIONS

Carefully read the user manual before using the appliance and keep it in order to consult later if needed.

- This appliance shall not be used by persons (including children under the age of 8) whose physical, sensorial or mental capacities are reduced, nor by persons lacking experience or knowledge, except when having received supervision or instructions from another person responsible for their security about the use of this appliance in advance.
- Never immerse the complete appliance into water or do not hold it under the tap, since it contains electrical parts. Risks of electrical shock!
- Never touch the baking plates while the appliance is working.
- Before plugging in the appliance, check if the voltage indicated on the appliance matches the mains voltage of your house.
- Do not use the appliance if the plug, electrical cord or appliance are damaged.
- When defective, never use the appliance, but let it be checked by the technical department, the after sales service or similarly qualified person from the manufacturer.
- Supervise children and don't let them play with the appliance.
- When the appliance is working, or cooling down, the appliance and the electrical cord should be held out of reach of children under the age of 8.
- Make sure the electrical cord does not come into contact with hot surfaces.
- Never plug in the appliance with wet hands.
- The appliance should always be plugged into a grounded plug, make sure it always is connected correctly.
- Never operate the appliance with separate timers, this could be dangerous.
- Never place the appliance near inflammable objects, such as linens, curtains, etc.
- Never use the appliance for other purposes than the ones described in this user manual.
- Never operate the appliance unattended.
- When the appliance is working, the surface on which it stands can become very hot.
- Place the appliance on a horizontal, flat and stable surface.
- If the appliance is used incorrectly, or for professional purposes, or if it is not used as prescribed in the user manual, the warranty shall expire, and we could be entitled to decline all responsibility for possible damage.

- Do not scratch or damage the non-stick coating of the baking plates. Use a wooden spatula rather than metal kitchen utensils. Never use a metal brush or a brush with hard bristles to clean the plates.

- The repairs can only be executed by a recognised agent or repair service. Never repair the appliance yourself, this would invalidate the warranty.

- Always unplug the appliance after use.

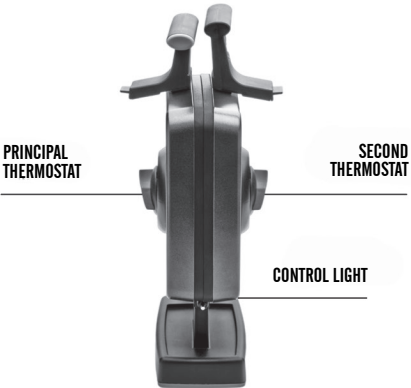
- Let the appliance cool down before moving or cleaning it

PRODUCT DESCRIPTION



ADJUSTABLE THERMOSTAT,
TO 8 BAKING LEVELS

COOL HANDLES,
EASY TO CLEAN

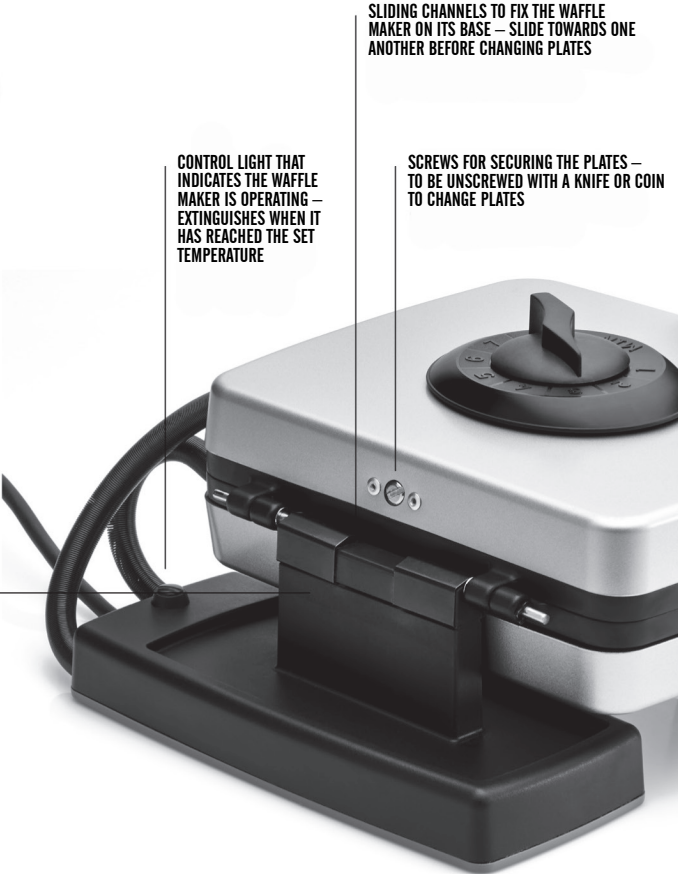


PRINCIPAL
THERMOSTAT

SECOND
THERMOSTAT

CONTROL LIGHT

AXIS TO ROTATE THE
APPLIANCE AND GUARANTEE
A PERFECT BAKING RESULT



SLIDING CHANNELS TO FIX THE WAFFLE
MAKER ON ITS BASE – SLIDE TOWARDS ONE
ANOTHER BEFORE CHANGING PLATES

CONTROL LIGHT THAT
INDICATES THE WAFFLE
MAKER IS OPERATING –
EXTINGUISHES WHEN IT
HAS REACHED THE SET
TEMPERATURE

SCREWS FOR SECURING THE PLATES –
TO BE UNSCREWED WITH A KNIFE OR COIN
TO CHANGE PLATES

PUTTING INTO SERVICE AND USE

Before the first use

- Remove all packaging material, stickers and labels.
- Clean the baking plates with warm soapy water and a soft cloth. Remove the baking plates from the appliance for an easy cleaning. The baking plates are dishwasher proof.
- Place the appliance on a horizontal, flat and stable surface.
- Place the appliance on a heat resistant surface.
- Completely unroll the electrical cord.

Use

- Plug in the appliance
- Set the thermostat on the upper side of the appliance by turning it clockwise
- There are 8 possible positions, depending on your recipe and the type of dough you make: soft, golden-brown, or delicious crispy waffles.
- When the control light extinguishes, your waffle maker has reached the set temperature.
- Open the waffle maker to 180°
- Grease the baking plates, with a brush for instance
- Put the dough in the middle of the two imprints of one of the baking plates

Remark : If it is liquid dough, use a ladle to pour the dough in order to fill both imprints of one baking plate. Close the appliance and turn it by rotating it on its base. The dough will spread in order to fill both imprints of both plates.

- Close the lid and press the handles for a good repartition of the dough.

Remark : Opening the waffle maker too soon during baking could split the waffle and make removal difficult.

- Once the baking is finished, remove the waffles with a Frifri waffle fork: a long two-pronged fork, in order not to damage your baking plates.
- The appliance is immediately ready for a next baking.

Caution : Do not touch the appliance right after use, it is very hot.

CHANGING THE BAKING PLATES in 5 minutes maximum

Pull the plug of the appliance from the socket and make sure the baking plates are cold before changing them.

Remove the used baking plates :

- Place the waffle maker with the thermostat on the upper side and turn it as to see the backside of the appliance.
- Unscrew the screw from the upper plate with a screwdriver or a coin (cfr. Description of the appliance).
- Turn the waffle maker and repeat the operation for the second plate.
- Slide the 2 sliders towards one another.
- Lift the waffle maker from its base.
- Open the waffle maker to release and remove the baking plates.



Insert new baking plates :

There is no preference for upper or lower plate

- Engage the baking plates in the upper and lower part of the waffle maker
- Close the waffle maker
- Put the waffle maker on its base
- Slide the sliders away from one another
- Fix the first screw
- Turn the waffle maker and fix the second screw



For more convenience, watch the video on frifri.be under the section Plates

PRESENTATION OF THE 8 AVAILABLE PLATES FOR THE FRIFRI WAFFLE MAKERS



Waffles from Brussels and Liège 4X6 - M001



Traditional waffles 4X7 - M002



Thin crispy waffles 6X10 - M003



Butter waffles 16X28 - M004



Croque-Monsieur M005



Heart shaped waffles M006



Cones M007



Stuffed waffles 4X7 - M008

MAINTENANCE

The inside of the appliance has a non-stick coating. Therefore, do not use metal kitchen utensils or aggressive cleaning products to clean the appliance. This might damage it.

- Pull the plug from the socket and let the appliance cool down. To improve the cooling down, you can open the appliance to 180°
- Clean the baking plates with warm soapy water and a soft sponge.

Remarques :

- ou can remove the baking plates from the appliance and clean them in the dishwasher.
- To easily remove chunks of sugar, let them burn by operating the appliance empty.

- Use a moist cloth to clean the outside of the appliance.

ENVIRONMENTAL PROTECTION — NORM 2002/96/CE

In order to protect our environment and your health, disposal at the end of the lifetime of electric appliances must be treated under certain rules and this requires involvement of everyone, supplier or user. Therefore, your appliance cannot in any way be disposed in a public waste bin or with normal domestic waste, as indicated by the symbol on the rating plate. When disposing of the appliance it is your responsibility to bring the appliance to an official collection centre for recycling of electric and electronic appliances.

For more information on the collection centres for recycling of appliances at the end of their lifetime, please contact the local authorities in your area, the household waste disposal service provider or the store where you bought your appliance.



ELECTRICAL CORD

Carefully check the electrical cord before each use. If it is damaged, do not use the appliance. The electrical cord can only be replaced by Dalcq S.A., her after sales service or a capable and authorised person in order to avoid any danger for the user. The electrical cord used is a HO5VV-F 3 G 0,75 mm². These appliances comply to the 2006/95/ CE, 2004/108/ CE, DEEE 2002/96/CE, rohs 2002/95/CE norms and the 1935/2004 regulation of the European Parliament on materials and articles intended to come into contact with food.

WARRANTY

Dalcq S.A. provides a special warranty on all parts of the appliance subject to conditions below. The legal regulations about warranty as well as the rights resulting from the legislation about responsibility of the defective products remain unaffected. Possible right to reimbursement of the buyer in case of defaults remain valid, if the conditions below are met.

1. Period of the warranty

The warranty applies to all parts of the appliance and starts from the date of purchase (date of invoice) of the appliance and has a duration of 2 years when used privately

2. Object of the warranty

Dalcq S.A. covers the material, construction and manufacturing defaults, provided the default was present at delivery and that the appliance was correctly operated by the buyer. The warranty covers free repair, or exchange of one or more defective components, or the exchange of the appliance for another appliance of the same value. It is up to Dalcq S.A. to decide which measure to undertake.

3. Warranty case

When breakdown/default, you must immediately advise:

- The store where you bought the appliance.
- The after sales service (written or via email) that the appliance will be returned, to provide an extended description of the problem with pictures.

4. Packaging

It is recommended to use the original packaging to return the appliance. If you use a different packaging, make sure it provides enough protection for typical transport risks and that it offers sufficient protection. A simple cardboard box filled with paper is not sufficient. Dalcq S.A. cannot be held responsible for damage resulting from insufficient packaging. The warranty then expires. The after sales service will inform you of the return procedure as well as of the costs this implies.

5. Cleaning

If you don't clean the parts or the appliance before returning it, Dalcq S.A. will invoice a cleaning set rate. It is the responsibility of the buyer to prove the real costs of cleaning are inferior to the invoiced set rate.

6. Withdrawal of the right to warranty

The right to warranty is withdrawn by:

- Incorrect use, treatment and storage. (for example, defaults caused by humidity, high temperatures)
- Repairs, repair attempts, modifications of any kind and use of non-original parts, etc. which were not executed by Dalcq S.A. or by an authorized company.
- Insufficient packaging and bad transport.
- Inappropriate mechanical influences on the appliance or on the parts of the appliance.
- Defaults that are not caused by the finishing or production of the appliance, such as fall, collision, damage, fire, earthquake, damage by flood, lightning, etc.
- Use other than household use, especially in a commercial environment.
- The costs incurred by Dalcq S.A. because of the returning of the appliance by the buyer, without warranty or right to restitution will be for the buyer.

7. Service après-vente

Dalcq S.A. - Rue du Hainaut 86
6180 Courcelles - Belgique
info@dalcq.com
support@dalcq.com

frifri.BE